

Queen Victoria's Diamond Jubilee

Musical score for "Queen Victoria's Diamond Jubilee" in D major, 2/4 time. The score consists of four staves of music. The first staff begins with a treble clef, a key signature of two sharps (D major), and a 2/4 time signature. The melody is written in eighth and sixteenth notes. Chords are indicated above the staff: D, G, A, D. The second staff continues the melody with chords D, G, A, A7, D. The third staff has chords D, G, A7, D, G. The fourth staff has chords D, G, A, A7, D. The piece concludes with a double bar line and repeat dots.

Piper's Cave

Musical score for "Piper's Cave" in A major, 2/4 time. The score consists of six staves of music. The first staff begins with a treble clef, a key signature of three sharps (A major), and a 2/4 time signature. The melody is written in eighth and sixteenth notes. Chords are indicated above the staff: A, F#m, D, A, E7. The second staff has chords A, F#m, D, A, E7, A. The third staff has chords D, A, A, E7. The fourth staff has chords D, A, A, E7, A. The fifth staff has chords D, A, A, E7. The sixth staff has chords A, F#m, D, A, E7, A. The piece concludes with a double bar line and repeat dots.

Lady Mackenzie of Coull

The musical score for 'Lady Mackenzie of Coull' consists of six staves of music in the key of D major. The chords used are: D, G, A, A7, D, A, D, G, A, D, D, D11, D, Em, A7, D, Bm, E7, A, D, G, Em, D, A7, D.

Campbell's Farewell to Redcastle

The musical score for 'Campbell's Farewell to Redcastle' consists of six staves of music in the key of D major. The chords used are: A, A, A, G, A, A, A, G, A, A, A, G, A, A, A, G, A.

NFF 2008-1

MARCHES

Harmony

Queen Victoria's Diamond Jubilee



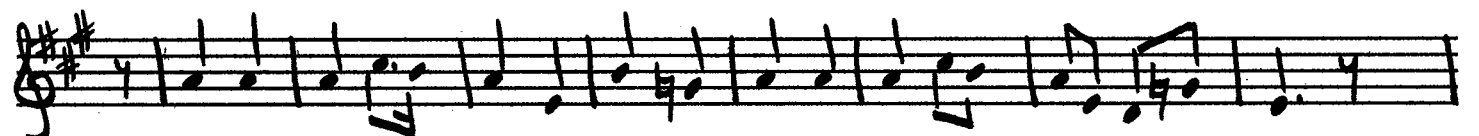
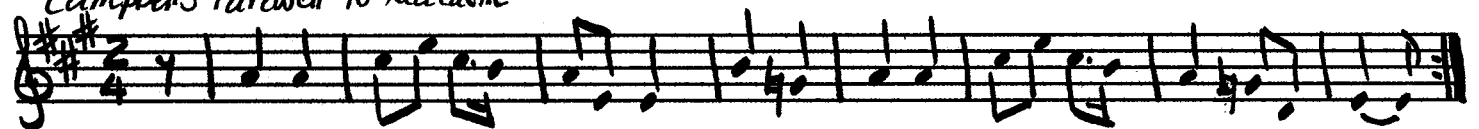
Piper's Cave



Lady Mackenzie of Coull



Campbell's Farewell to Redcastle



arr. Trish Barker